

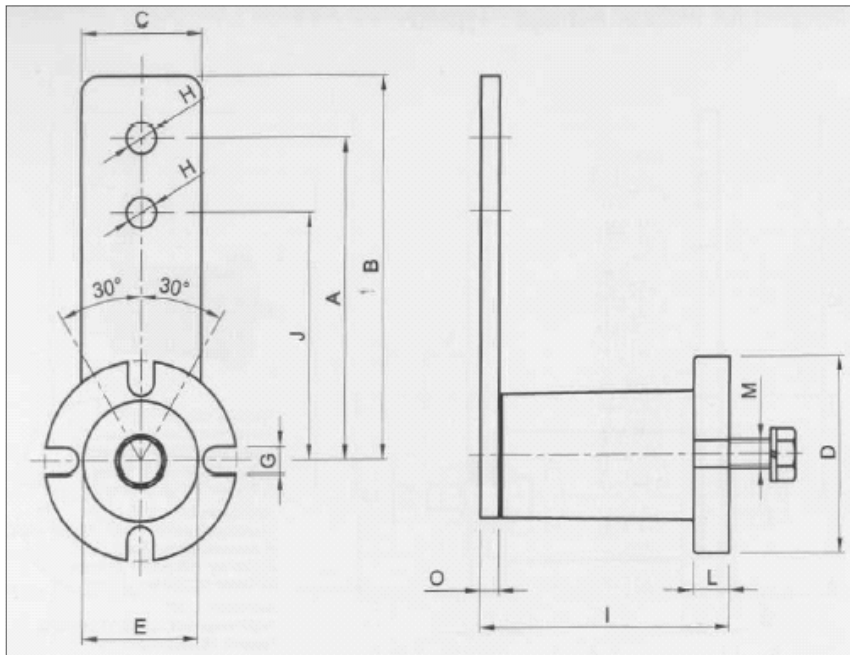


Powerdrive Tensioners

Bell, Scott & Co. Ltd.



PART NO.	MOVEMENT DEGREE	TORQUE POINT A	(Newton's) POINT J	WEIGHT KG
PD 10 / 11	0 - 30	85	113	0.28
PD 20 / 15	0 - 30	136	170	0.48
PD 30 / 18	0 - 30	340	425	0.73
PD 40 / 27	0 - 30	790	1027	2.00
PD 50 / 38	0 - 30	1600	2000	4.20
PD 60 / 45	0 - 30	2550	3190	7.00



Type	A	B	C	D	E	G	H	I	J	L	M	O	P	T	WEIGHT
PD 10 / 11	80	90	25	40	20	7	8.5	50	60	6	M6	5	M4	25	0.28
PD 20 / 15	100	112.5	30	50	30	9	10.5	62	80	8	M8	5	M6	35	0.48
PD 30 / 18	100	115	35	60	35	9	10.5	76	80	10	M10	6	M6	40	0.73
PD 40 / 27	130	155	50	80	48	11	12.5	105	100	15	M12	8	M8	60	2.00
PD 50 / 38	175	205	65	100	62	13	20.5	136	140	15	M16	10	M8	80	4.2
PD 60 / 45	225	260	80	120	80	13	20.5	196	180	18	M20	12	M10	115	7.0